

DX26-P DIRECT DRIVE GRINDER



FEATURES:

Robust Gearbox

Offers precision, superior quality, and efficiency

Adjustable Weight System

Easy folding weights with secure locks allow the operator to tune in head pressure

Foldable Handle

Allows for easy, compact transportation

LED Lighting

Improves visibility allowing the operator to monitor the floor

Transportation Wheel

Improves maneuverability on the job site

EPA Certified Propane Engine

Provides optimal performance with more uptime and lower emissions

Emissions Monitoring Unit

Monitors and detects if Carbon Monoxide (CO) emissions exceed the OSHA Permissible Exposure Limit over an 8-hour Time Weighted Average

Magnetic Plates

Magnetic plates allow the operator to quickly attach and detach tooling

COMES WITH:



Propane Tank



Third wheel for easy job site movement



12 Velcro Holders

SPECIFICATIONS:

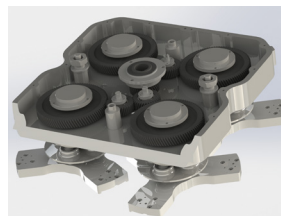
WORKING WIDTH	26"
ENGINE	KAWASAKI 852cc (27HP) PROPANE
WEIGHT	1200 LBS
HEAD PRESSURE	600-720 LBS
HEADS	4 X 12"
WORKING PLATE SPEED	1440 RPM @ FULL THROTTLE
WATER TANK CAPACITY	5.5 GALLONS
PROPANE TANK SIZE	20 LBS
DUST CONTROL ATTACHMENT	2.5" MALE CAMLOCK



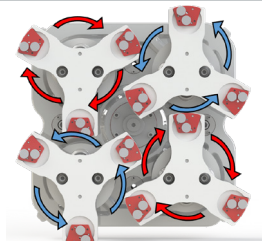
Large foldable handle for easy operation and compact storage



Centralized control unit with carbon monoxide monitor



Robust gears to drive tool plates



Counter rotating heads make it easy for the operator to use