



DiamaPro®  
SYSTEMS

## OWNER'S MANUAL

# WVX

## INDUSTRIAL WET VACUUM



## USER & MAINTENANCE BOOK

SAVE THESE INSTRUCTIONS FOR FUTURE REFERENCE



# WARRANTY REGISTRATION CARD

Form must be completed and submitted within 30 days from the date of purchase.

## Customer Information

First and Last Name

Company Name

Address

City

State

Zip Code

Phone Number

Email

## Machine Information

Machine Type

Machine Model

Serial #

Purchase Date (dd/mm/yy)

Diamapro® Systems  
3343 Peachtree Road NE  
Suite 145 #24  
Atlanta, GA 30326

470-977-2323 ■ [www.diamaprosystems.com](http://www.diamaprosystems.com) ■ [info@diamaprosystems.com](mailto:info@diamaprosystems.com)

## INTRODUCTION

Thank you for your recent DiamaPro® Systems purchase. You have bought a high quality, long-life commercial vacuum cleaner. For your safety and continued satisfaction with this product, please read this owner's manual carefully before using. For your information, all parts used in the manufacturing of this vacuum cleaner meet or exceed rigid quality control standards. We stand behind all our products and are available to assist you with a knowledgeable and dedicated staff. If we can help you in anyway, please call Customer Service at 470-977-2323.

We also recommend that you visit our website [www.diamaprosystems.com](http://www.diamaprosystems.com) for the fastest, most efficient way to complete your product registration and see other DiamaPro® Systems' products and accessories to meet your cleaning needs.

## OPERATION

### BEFORE EACH USE

- This vacuum cleaner is designed for wet only pickup. Please avoid picking up dry materials.
- Make sure the tank is clean, and that there is no debris in the tank that can impede the action of the pump float mechanism.
- Make sure the mesh filter bag is installed on the inlet inside the canister. The bag should be empty, and the slide-on clamp should be installed on the bottom of the bag. Position the thin, flat plastic strip that is attached to the mesh filter bag, over the rim of the canister. This strip helps retain the bag when it fills with debris.
- Make sure that the float mounted on the underside of the motor head is able to move freely, and that the filter on the outside of the float housing is clean and properly in place. This filter will protect the vacuum motor from debris.
- Attach the motor head to the canister using the two metal clamps mounted on the side of canister. The pump cord exits the rear of the canister, near the top. Plug this cord into the electrical outlet on the top rear of the motor head.
- Attach the long discharge hose to the brass fitting on the rear of the canister. The fitting is a ball coupling type. Pull the collar of the female brass fitting toward the canister before inserting the hose fitting.

### TO OPERATE

- The vacuum cleaner motor is controlled by the switch on the top left side of the motor head. The pump out feature is controlled by the switch on the top right side of the motor head. If using the pump out feature, the pump switch can be left on.
  - The pump is equipped with a float switch, which will automatically start the pump when the water level in the canister rises. The float switch will automatically stop the pump when the liquid level drops.
  - If the vacuum is being used without the long discharge hose, leave the pump switch off. The liquid in the canister can also be emptied using the short, black, corrugated hose attached to the rear of the canister. Be sure the end of the hose is securely attached to the stationary drain hose plug after use.
  - Check the mesh bag frequently for debris. To empty, remove the bag from the canister and slide off the retaining clip on the bottom of the bag. Reinstall the mesh filter bag before continuing to use the vacuum.
- Do not operate the vacuum without the mesh filter bag in place



NEVER LUBRICATE THE VACUUM CLEANER MOTOR. THE MOTOR BEARINGS ARE PERMANENTLY SEALED. THIS VACUUM IS INTENDED FOR INDOOR OR OUTDOOR USE AND FOR WET PICKUP, BUT IT IS NOT INTENDED TO BE EXPOSED TO RAIN.

## WARRANTY

DiamaPro® Systems' WVX model vacuums are warranted to be free from manufacturing defects in normal service for a period of one or two years from the date of purchase by the original consumer purchaser. Component manufacturers offer separate warranty periods. Call 470-977-2323 for complete information.

DiamaPro® System's obligation under this warranty is expressly limited to the replacement of such part or parts as inspection shall disclose to have been defective.

This warranty does not apply to defects caused by damage, unreasonable use, faulty repairs made by others or defects caused by failure to provide reasonable maintenance.

Further, the warranty is void if the product, or any of its components, is altered or modified by the consumer or if the product is used in an inappropriate manner or with equipment not recommended by the manufacturer.

Wear items are not covered under warranty: examples include: belts, wheels, casters, bearings, cart wheels, filters, wear pads, spark plugs, hoses, wands and squeegees, motors, etc.

To qualify for warranty coverage, DiamaPro® vacuums must be registered within 30 days of purchase. Registration can be completed online at [www.DiamaProSystems.com](http://www.DiamaProSystems.com).

To request your warranty service you MUST send a written request to the dealer or directly to the manufacturer including the manufacturing details that can be found on a plate fitted inside your machine together with a copy of the invoice.

## SAFETY INSTRUCTIONS

When using an electrical vacuum, basic safety precautions should always be followed, including the following:

### READ ALL INSTRUCTIONS BEFORE USING YOUR VACUUM CLEANER

#### WARNING: To reduce the risk of fire, electrical shock, or injury:

1. Do not leave appliance when plugged in. Unplug from outlet when not in use and before servicing.
2. Do not expose to rain. Store indoors.
3. Do not allow to be used as a toy. Close attention is necessary when used by or near children.
4. Use only as described in this manual. Use only manufacturer's recommended attachments.
5. Do not use with damaged cord or plug. If appliance is not working as it should, has been dropped, damaged, left outdoors, or dropped into water, contact Customer Service.
6. Do not pull or carry by cord, use as a handle, close a door on cord, or pull cord around sharp edges or corners. Do not run appliances over cord. Keep cord away from heated surfaces.
7. Do not unplug by pulling on cord. To unplug, grasp the plug, not the cord.
8. Do not handle plug or appliance with wet hands.
9. Do not put any object into openings. Do not use with any opening blocked; keep free of dust, lint, hair and anything that may reduce air flow.
10. Keep hair, loose clothing, fingers and all parts of the body away from openings and moving parts.
11. Do not pick up anything that is burning or smoking, such as cigarettes, matches, or hot ashes.
12. Do not use without dust bag and/or filters in place.
13. Turn off all controls before unplugging.
14. Use extra care when cleaning on stairs.
15. Do not use to pick up flammable or combustible liquids such as gasoline, or use in areas where they may be present.
16. This vacuum is for commercial use only.
17. Connect to a properly grounded outlet only. See grounding instructions

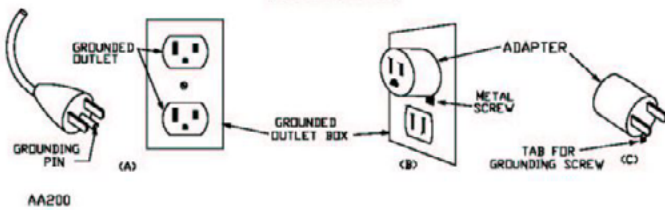
## SAVE THESE INSTRUCTIONS - GROUNDING

This appliance must be grounded. If it should malfunction or breakdown, grounding provides a path of least resistance for electric current to reduce the risk of electric shock. This appliance is equipped with a cord having equipment grounding conductor and grounding plug. The plug must be inserted into an appropriate outlet that is properly installed and grounded in accordance with all local codes and ordinances.



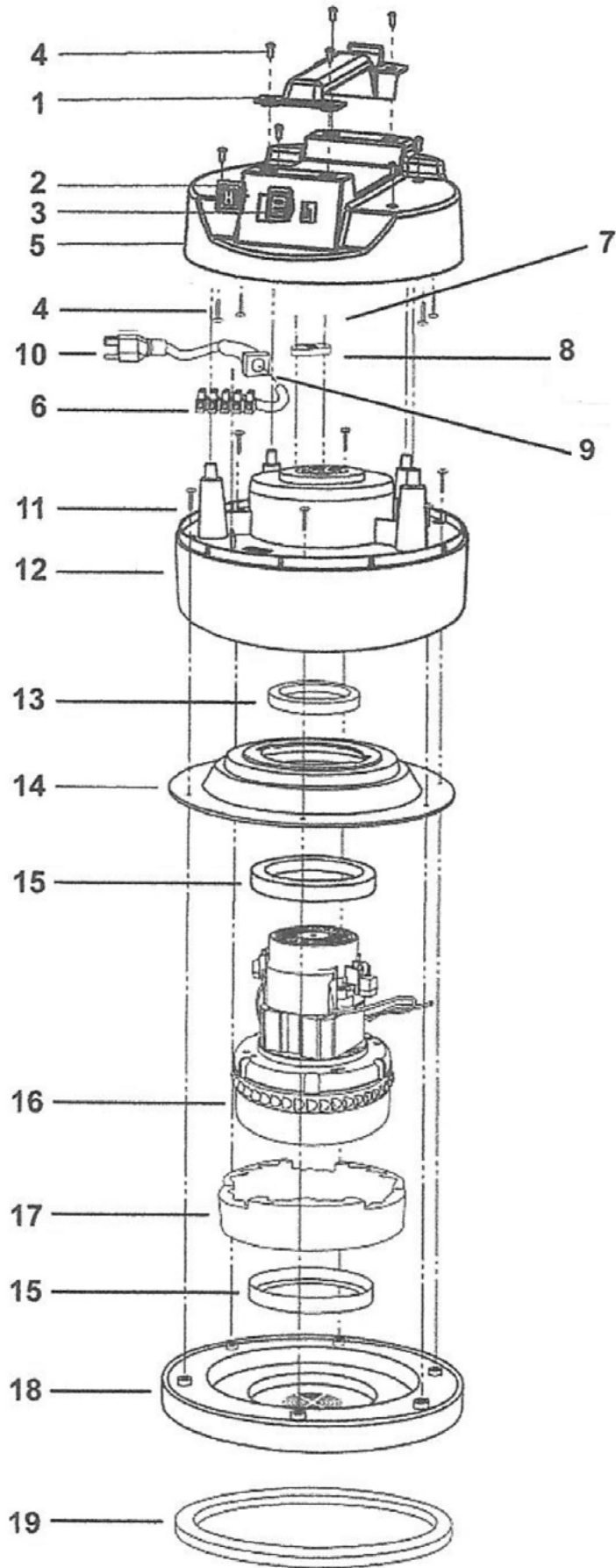
IMPROPER CONNECTION OF THE EQUIPMENT GROUNDING CONDUCTOR CAN RESULT IN A RISK OF ELECTRIC SHOCK. CHECK WITH A QUALIFIED ELECTRICIAN OR SERVICE PERSON IF YOU ARE IN DOUBT AS TO WHETHER THE OUTLET IS PROPERLY GROUNDED.

Do not modify the plug provided with the appliance - if it will not fit the outlet, have a proper outlet installed by a qualified electrician. This appliance is for use on a nominal 120 - Volt circuit, and has a grounded plug that looks like the plug illustrated in sketch A below. A temporary adapter that looks like the adapter illustrated in sketches B and C may be used to connect this plug to a 2-pole receptacle as shown in sketch B if a properly grounded receptacle is not available. The temporary adapter should be used only until a properly grounded outlet (sketch A) can be installed by a qualified electrician. The green colored ear, lug, or the like extending from the adapter must be connected to a permanent ground such as a properly grounded outlet box cover. Whenever the adapter is used, it must be held in place by a metal screw.



NOTE: In Canada, the use of a temporary adapter is not permitted by the Canadian Electrical Code.

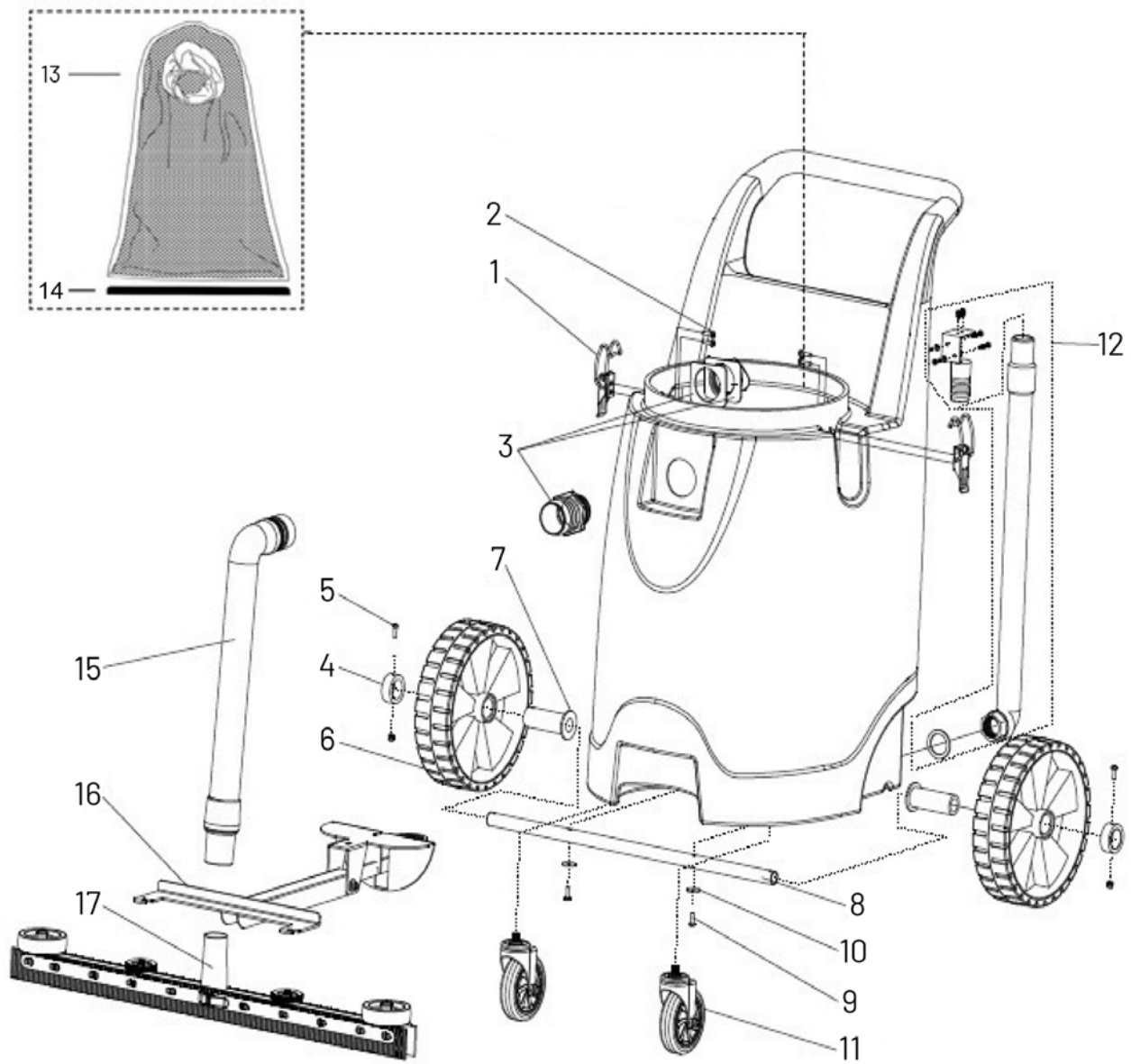
# MOTOR HEAD ASSEMBLY



## MOTOR HEAD ASSEMBLY

ITEM NO.	PART NUMBER	DESCRIPTION	QTY.
1	DP-WVX-HNDL	Top Handle for DiamoPro WVX	1
2	DP-WVX-ISWK	Switch for DiamoPro WVX	2
3	DP-WVX-OTLT	Outlet for DiamoPro WVX	1
4	DP-WVX-DMCGESCREW	Dome and Cage Screw for DiamoPro WVX	8
5	DP-WVX-DM	Dome for DiamoPro WVX	1
6	DP-WVX-TSTRIP	Terminal Strip for DiamoPro WVX	1
7	DP-WVX-RSTSCREW	Restraint Screw for DiamoPro WVX	3
8	DP-WVX-CRDRST	Cord Restraint for DiamoPro WVX	1
9	DP-WVX-RBSTRLF	Rubber Strain Relief for DiamoPro WVX	1
10	DP-WVX-CRD	Cord for DiamoPro WVX	1
11	DP-WVX-BLWSCREW	Blower Chamber Screw for DiamoPro WVX	6
12	DP-WVX-BLWCHMBR	Blower Chamber for DiamoPro WVX	1
13	DP-WVX-CGSKT	Blower Chamber Gasket for DiamoPro WVX	1
14	DP-WVX-TMADPTR	Top Motor Adapter for DiamoPro WVX	1
15	DP-WVX-HGSKT	Motor Housing Gasket for DiamoPro WVX	2
16	DP-WVX-MTR	Motor for DiamoPro WVX	1
17	DP-WVX-FMRNG	Foam Ring for DiamoPro WVX	1
18	DP-WVX-CNCP	Can Cap for DiamoPro WVX	1
19	DP-WVX-CCGSKT	Can Cap Gasket for DiamoPro WVX	1

# TANK ASSEMBLY

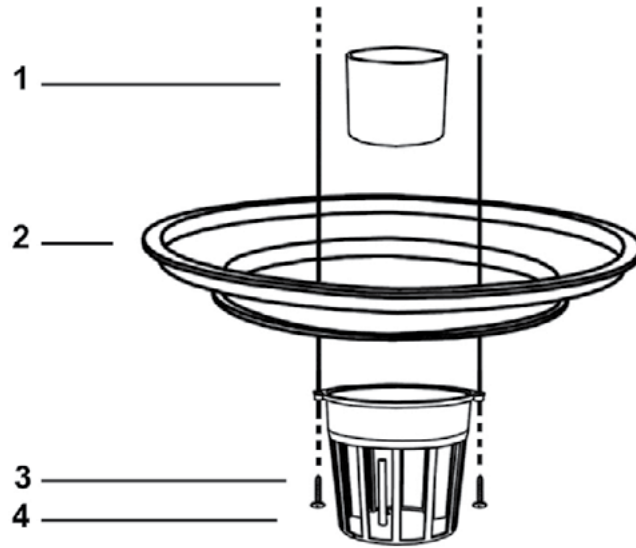


## TANK ASSEMBLY

ITEM NO.	PART NUMBER	DESCRIPTION	QTY.
1	DP-WVX-TNKCLMP	Tank Clamp for DiamaPro WVX	2
2	DP-WVX-CLMPSCREW	Clamp Screw for DiamaPro WVX	4
3	DP-WVX-INLT	Inlet for Hose with Gasket for DiamaPro WVX	1
4	DP-WVX-WCAP	Wheel Cap for DiamaPro WVX	2
5	DP-WVX-WCAPSCREW	Wheel Cap Screw for DiamaPro WVX	2
6	DP-WVX-WHEEL	Wheel for DiamaPro WVX	2
7	DP-WVX-WBRNG	Wheel Bearing for DiamaPro WVX	2
8	DP-WVX-AXLE	Axle for DiamaPro WVX	1
9	DP-WVX-AXLSCREW	Axle Mounting Screw for DiamaPro WVX	2
10	DP-WVX-AXLWASH	Axle Washer for DiamaPro WVX	2
11	DP-WVX-CSTR	Caster for DiamaPro WVX	2
12	DP-WVX-DHASSMBLY	Drain Hose Assembly for DiamaPro WVX	1
13	DP-WVX-FBG	Mesh Filter Bag for DiamaPro WVX	1
14	DP-WVX-FBGCLP	Filter Bag Clip for DiamaPro WVX	1
15	DP-WVX-IHASSMBLY	Inlet Hose Assembly for DiamaPro WVX	1
16	DP-WVX-SQGBRCKT	Squeegee Bracket for DiamaPro WVX	1
17	DP-WVX-SQGASSMBLY	Squeegee Assembly for DiamaPro WVX	1
NP	DP-WVX-SQGBLDSET	Squeegee Blade Set for DiamaPro WVX	N/A

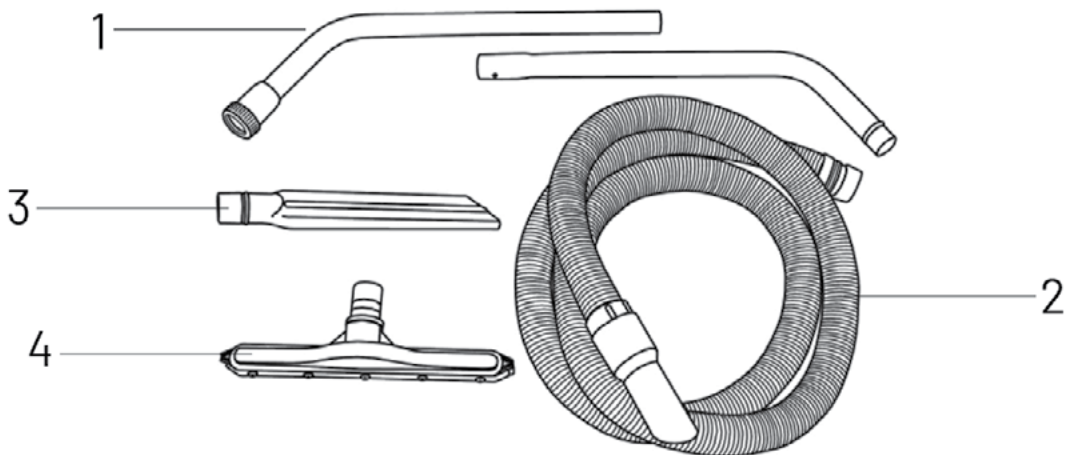


## FILTER ASSEMBLY



ITEM NO.	PART NUMBER	DESCRIPTION	QTY.
1	DP-WVX-FLT	Float for DiamaPro WVX	1
2	DP-WVX-FRNG	Filter Ring for DiamaPro WVX	1
3	DP-WVX-DMCGESCREW	Screw for DiamaPro WVX	2
4	DP-WVX-FLTCGE	Float Cage for DiamaPro WVX	1

## TOOL KIT



ITEM NO.	PART NUMBER	DESCRIPTION	QTY.
1	DP-WVX-WAND	Two Piece Wand for DiamaPro WVX	1
2	DP-WVX-HOSE	Crush Proof Hose with Ends for DiamaPro WVX	1
3	DP-WVX-CTOOL	Crevice Tool for DiamaPro WVX	1
4	DP-WVX-TOOL	Tool for DiamaPro WVX	1

## **Customer Acknowledgment and Assumption of Responsibility for Modification to any Product.**

Customer expressly acknowledges that modification of any equipment, machines, or other products purchased from Niagara Machine, Inc. ("Niagara"), including but not limited to DiamaPro Systems Products (collectively, "Products") through the attempted or actual use or misuse, adjustment, alteration, application of additional components, removal of provided components, repairs or attempted repairs by Customer (collectively, "Modifications") can lead to Product malfunction causing serious risks. Such risks include, but are not limited to, Product damage, bodily injury, death, or loss of or damage to property. Customer agrees that Customer is solely responsible for any Modifications Customer performs on any Product purchased from Niagara, and that Niagara is not responsible and will not be held liable for any claims, damages, or injury arising from Modifications by Customer, including Customer's employees, subcontractors, agents, representatives, affiliates, and assigns, to any Product purchased from Niagara. Customer further acknowledges and agrees that any Modification(s) to a Product may, at DiamaPro Systems' and/or Niagara's election, void any warranty applicable to the Product.

Customer agrees that, to the greatest extent permitted by law, Customer shall indemnify, hold harmless and, at Niagara's request, defend (with counsel reasonably approved by Niagara), Niagara, Niagara's parent, subsidiaries, affiliates and the officers, directors, employees and agents of Niagara (individually and collectively "Niagara Indemnitees") from and against, and pay or reimburse them for any and all third-party claims, losses, damages, liabilities, lawsuits and expenses (including reasonable attorneys' fees) relating to bodily injury, death, or loss of or damage to property caused by or arising from any Modification to a Product by Customer, its employees, subcontractors, agents, representatives, affiliates, and assigns (individually and collectively, "Customer Group"), with respect to the Products Customer purchases from Niagara.

Customer acknowledges that Customer has read and understands these terms, and voluntarily assumes full and sole responsibility for any and all effects arising from any Modification to a Product by Customer Group.



**DiamaPro**®  

---

**SYSTEMS**

DiamaPro® Systems  
3343 Peachtree Road NE  
Suite 145 #24  
Atlanta, GA 30326  
470-977-2323